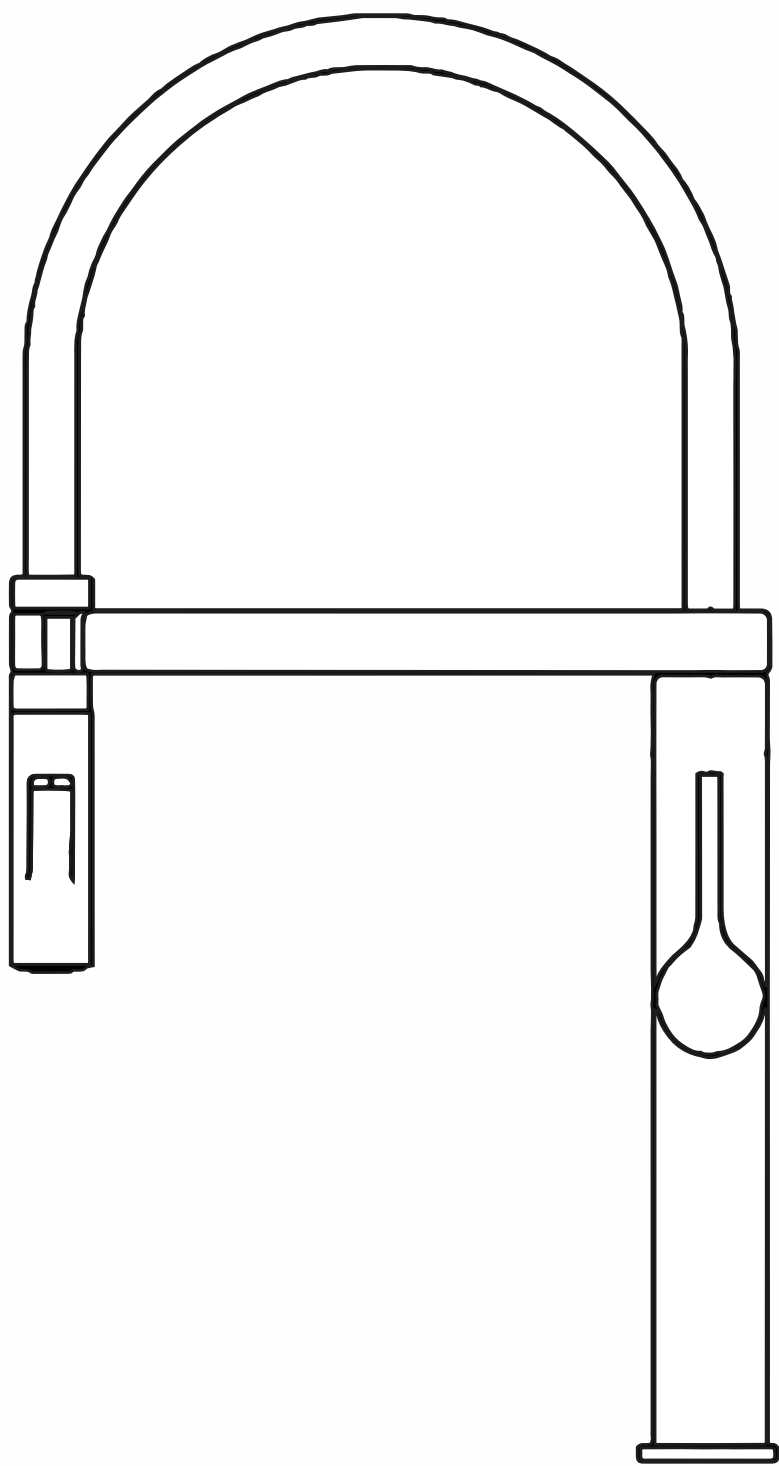
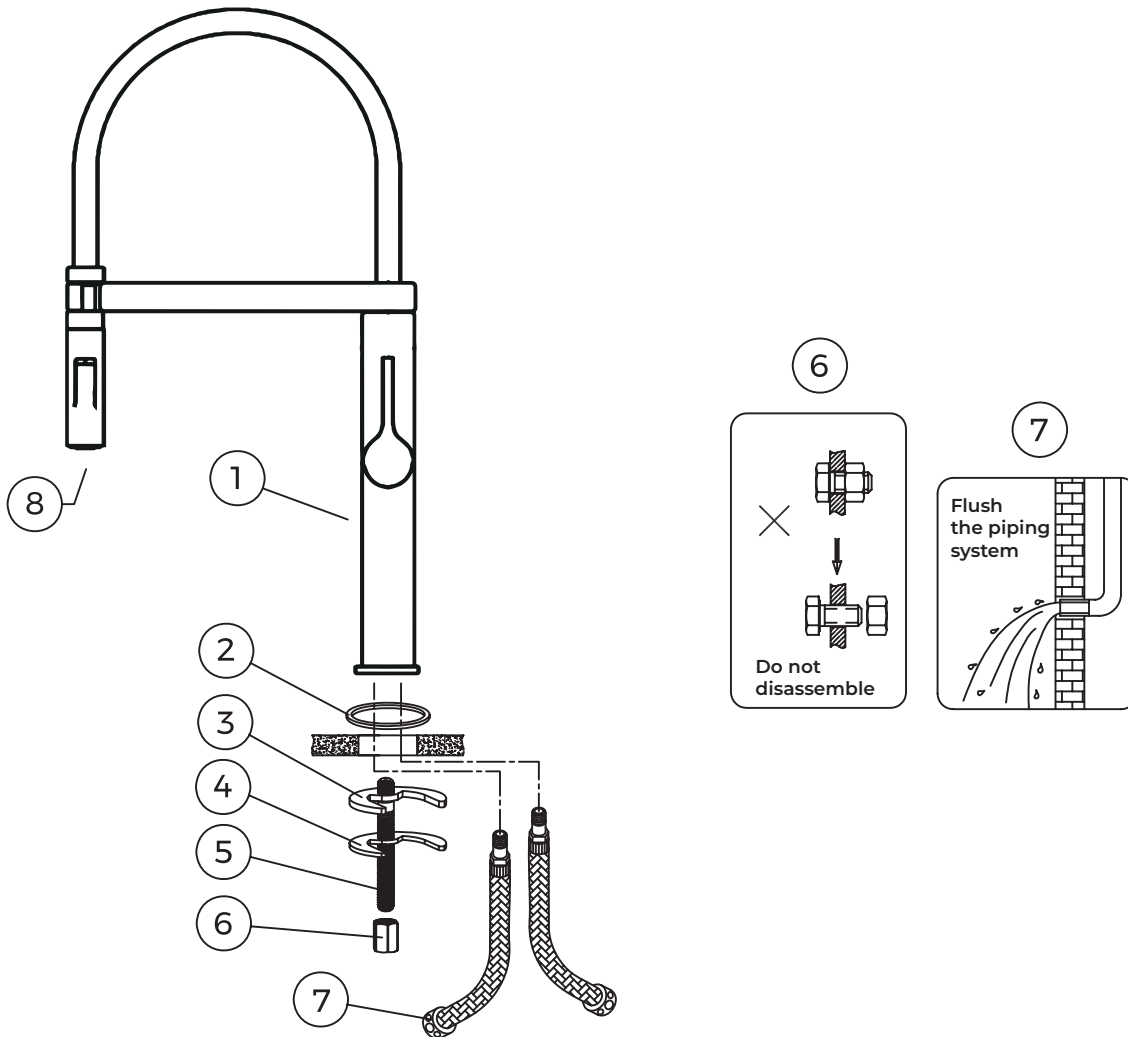


OLTENS



Borga

Single lever kitchen tap – installation instructions



Check the parts needed for the installation against the list:

ITEM NO.	PARTS LIST	QUANTITY
1	Single lever kitchen tap	1
2	Seal	1
3	C-shaped rubber washer	1
4	Stabiliser	1
5	Lock element	1
6	Nut	1
7	Tap tails	2
8	Aerator	1

Note! Accessories may change without affecting their function. The presented manufacturing drawings are for illustration purpose only. The size and shape of the tap depends on the selected tap model.

Installation instructions

- Do not disassemble the body of the tap, as it had been assembled, installed and checked before it was released by the manufacturer.
- To avoid damaging the tap, prior to installation the piping system should be flushed to remove any debris, such as sand, limescale and sludge.
- After the installation, please ensure that all connections are tight and there are no leaks.

Technical data

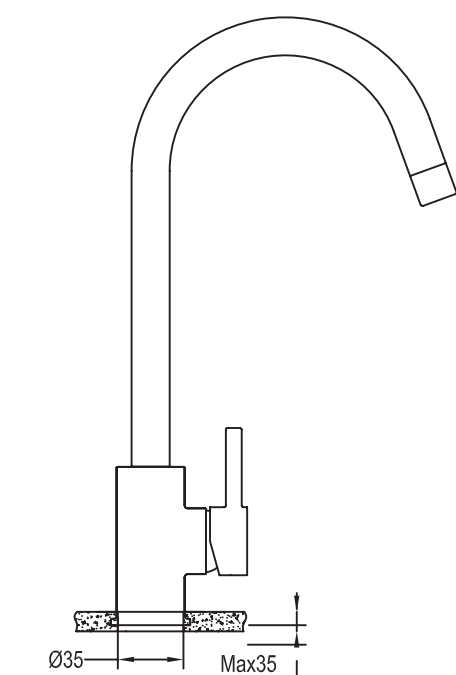
Maximum pressure **1 MPa**

Recommended pressure **0.1–0.5 MPa**

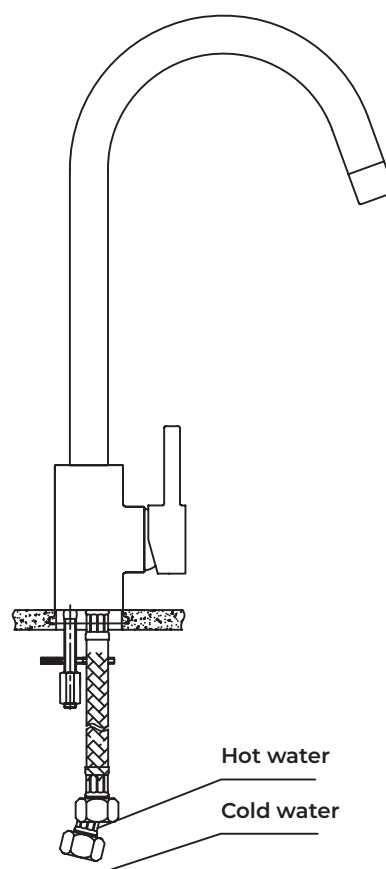
Maximum hot water temperature **90°C**

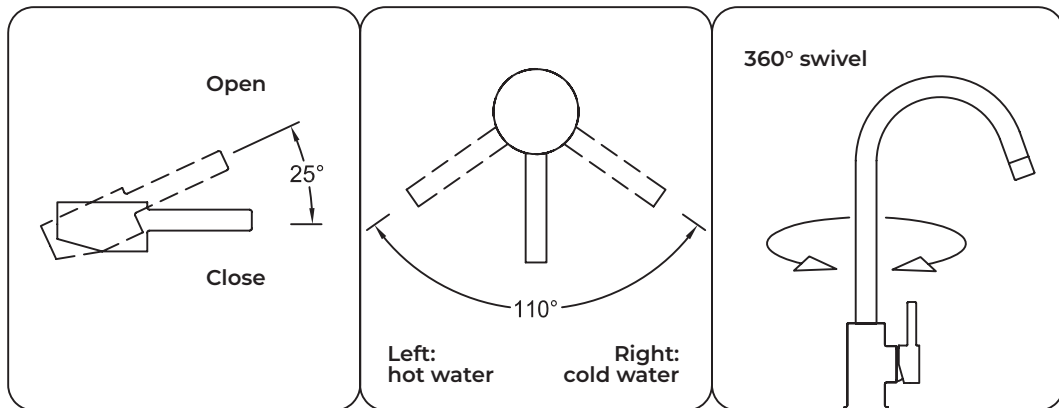
Recommended hot water temperature **65°C**

Ensure that the hot and cold water connections are installed correctly.



Ensure that tap holes are the right size





Operation

To start the water flow and fluently adjust its rate, turn the handle vertically upwards. To increase the water temperature, turn the handle left; to reduce the water temperature, turn the handle right. When the handle is on the extreme left, only hot water flows, when the handle is on the extreme right, only cold water flows. The spout swivels 360°.

Care and maintenance

Flush with clean water and wipe with a dry, soft cloth.

For heavier deposits, it is recommended to use special tap cleaning agents, preferably professional Oltens products from the NanoCare and NanoShine series. Never use agents containing alcohol, disinfectants, solvents and strong bases.

Never clean the surface of the tap with rough cloths or cleaning agents containing abrasive materials and acids. If needed, remove and clean the aerator.

